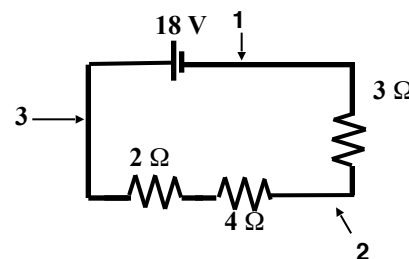


Electric Current # _____ Name _____ Period _____

1. Answer the following questions about the Series circuit.

- What is the voltage leaving the battery?
- What is the total resistance of the circuit?
- What is the current that goes past #1?
- How much current goes through the 3 Ω resistor?
- How much voltage is used by the 3 Ω resistor?
- What is the current that goes past #2?
- How much current goes through the 4 Ω resistor?
- How much voltage is used by the 4 Ω resistor?
- How much current goes through the 2 Ω resistor?
- How much voltage is used at the 2 Ω resistor?
- How much current goes through #3?



2. Answer the following questions about the Parallel circuit.

- What is the voltage leaving the battery?
- What is the total resistance of the circuit?
- What is the current that goes past #1?
- How much voltage is used by the 3 Ω resistor?
- How much current goes through the 3 Ω resistor?
- How much voltage is used at the 6 Ω resistor?
- How much current goes through the 6 Ω resistor?
- How much current goes through #2?

